

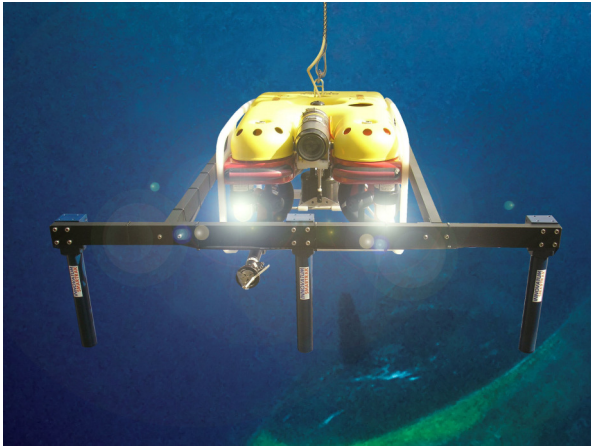


INNOVATUM

The worlds most experienced supplier of magnetic submarine cable & pipe detection systems



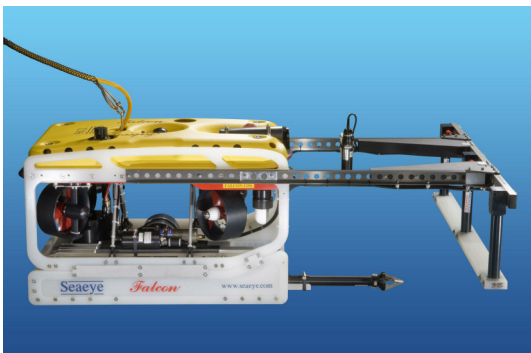
Seaeye Falcon Inspection Class ROV



The Seaeye Falcon is a compact remotely operated vehicle suitable for a variety of observation and inspection tasks. It is ideally suited to rig support eyeball operations where it sets the highest standards including an impressive power to weight ratio.

Housed in a 1,000 x 500 x 600 millimetre frame, the Falcon is equipped with electrically powered vectored thrusters, a tilt able high resolution colour video camera and 75 watt LED floodlights.

The Falcon is equipped with an Innovatum Smartrak 9, allowing a full cable and pipe line survey to be carried out to the same standard as using a work class ROV. The Falcon's small footprint allows the vehicle to be operated from small vessel reducing the operation cost significantly.



Features

- 300 metres Depth rating
- Propulsion 4 x vectored horizontal and 1 x vertical
- 14 kg payload
- 50 kgf thrust
- Cable and Pipe tracking survey equipment fitted
- Hand Powered Winch



Chassis

The extremely rugged polypropylene and stainless steel chassis is totally maintenance free, non corroding and self-supporting in seawater.

Propulsion

The Falcon MCT01 thrusters are magnetically coupled and run cool without oil. Having no moving shaft seals they are extremely low maintenance, reliable and ideal for use in sensitive areas such as fisheries and on reefs.

Seaeye Falcon

Technical Specifications

Remotely Operated Vehicle

Manufacturer	Saab Seaeye Ltd
Depth rating	300 msw
Power Requirements	Single phase 100-270 VAC at 2.8 kW
Length	1000 mm
Height	500 mm
Width	600 mm
Launch weight	55 kg
Forward speed	>3 knots
Thrust forward	50 kgf
Thrust lateral	28 kgf
Thrust vertical	13 kgf
Payload	14 kg
Propulsion	Five MCT01 Brushless DC thrusters 4 x vectored horizontal and 1 x vertical
Auto Functions	Depth and Heading
Heading Control	1 degrees
Depth Control	0.5% FSD
Lighting	2 x LED Lamps

Vehicle Equipment Fit

Camera System	1 x Kongsberg Colour Zoom Camera (18:1) 1 x Seaeye wide angle Low - Light B&W Camera
Sonar	1 x Tritech Super SeaPrince
Cable and Pipe tracker	1 x Innovatum Smartrak 9
Profiler	1 x Super SeaKing DFP
Emergency Flasher	Fitted as Standard



All specifications are subject to change in line with Innovatum's policy of continual product development